

Bradford

**Sixth
Form**

Information Guide 2023

Bradford College



Who we are



Bradford Sixth Form is a purpose-built facility providing a comfortable study environment with wi-fi in the heart of Bradford City Centre.

The building provides study spaces with computers, a separate small library and dedicated Sixth Form classrooms.

We also have a Sixth Form social space with vending machines providing hot drinks and snacks.

You will also have access to the café in David Hockney Building next door providing hot and cold food at break and lunch.

Your path to a career

We want you to take your time in choosing the right course and combination of subjects to support your further study at university or future employment.

You will receive guidance from the Sixth Form team, your Year 11 tutor, careers staff and the subject staff who teach you now.

Read this booklet very carefully before making your final choice.

Here's what you need to know:

- Students are required to achieve grade 5 or 6 at GCSE in subjects which they wish to study in the Sixth Form, or in relevant subjects where specified in the individual subject pages.
- In addition to your chosen subjects, you will be required to take part in a range of enrichment activities and courses on offer, details of which can be found after the A Level subject description.
- Students on an A Level programme study three linear subjects. We also offer a Level 3 BTEC qualification in Applied Science which is equivalent to 3 A level grades that is taught exclusively in the David Hockney Building.
- Courses on offer depend to a certain extent on the number of students opting for them. While we will try to ensure that all students are able to access their chosen course, there may be some minor changes.



Student Support



You will be making the decision to apply for the Sixth Form with the knowledge that it involves hard work and commitment.

We will support you in this by providing excellent facilities and a support network of dedicated teachers.

You are expected to treat the facilities provided with care and respect and to tidy up after yourselves.

Independent Study

You will be allocated time each week for independent study. You will be expected to use this time constructively either on further study or on research.

For each hour of taught lessons in College, you will need to spend upwards of one hour on independent study to achieve your full potential.

Year 12 students are required to remain in College for all independent study sessions. Once they have completed their UCAS applications, Year 13 students may negotiate some limited periods of home study.

Tutor Time

You will be allocated to a tutor group and your tutor will see you regularly to discuss your progress, both formally and informally.

Sixth Form Tutors are the first point of contact between parents and the College.

For students applying to university, your tutor will support you during the application process and write your reference.

A full parents' evening is held in the Autumn Term and in the Spring Term for Year 12 and 13. Parents will be contacted at other times if there are issues to be discussed.

Progress reports are issued in the Spring Term and again before Summer.

The Head of Sixth Form and Assistant Head of Sixth Form are available most mornings from 8.00am to 8.30am for meetings with parents if you need to make an appointment.

Absence and Attendance

Full attendance is vital to support achievement. All Sixth Form students are expected to aim for 100% attendance.

Attendance at morning and afternoon registration is compulsory for Year 12 and for Year 13 students. However, for those Year 13 students who demonstrate a good attendance and work record, and who have completed their UCAS application if continuing to university, some home study will be permitted.

This is not automatic and must be negotiated with your Form Tutor.

Attendance will be monitored by form tutors and any students causing concern will be referred to the Assistant Head of Sixth Form and the Head of Sixth Form. Attendance that drops below 95% will trigger contact home with parents.

Eating and Drinking

Students may eat food brought from home in the designated eating areas at the front of the building and are expected to tidy up after themselves.

We have a constant supply of hot water for making drinks and a microwave oven for the use of Sixth Formers.

You are encouraged to use the college canteen Facilities in David Hockney Building.

Water is always available - but not near the computers.



What you can expect from us



While we obviously have high expectations of you, you can expect certain commitments from us in return.

- Expert tuition and excellent teaching in your chosen subjects
- The support of staff in helping you achieve your full potential
- Support and guidance regarding your future after Bradford Sixth Form
- Support during the UCAS process and a reference for university, apprenticeship, or employment
- In Year 12 you will be kept informed about university courses and open days (each Year 12 student is authorised for three university open day visits in the Summer Term after internal or external examinations).

Careers and Employability Support

Year 12 and 13 are also offered drop-in sessions with the Bradford College Careers Adviser Team and individual appointments can be arranged on request.

We provide sessions focused on Careers and Employability in both Year 12 and Year 13. This provides timely input from guest speakers across different professions and industries and covers various topics including interview skills training ahead of the university and job recruitment season.

For those students taking up direct employment, we also provide additional CV writing support and mentoring throughout the recruitment process.

Work Experience

During Year 12 students undertake two weeks of work experience in the summer term. Students are encouraged to use this opportunity to seek relevant work experience in line with their future career aspirations. Support is available for students who are unable to find a private placement.

Subject	Board	Entry Requirements
Biology	AQA	Biology 6 or Combined Science 6-6, Mathematics grade 6 & English Language grade 5. APS 5.6
Chemistry	AQA	Chemistry 6 or Combined Science 6-6, Mathematics grade 6 & English Language grade 5. APS 5.6
Physics	AQA	Physics 6 or Combined Science 6-6, Mathematics grade 6 & English Language grade 5. APS 5.6
Mathematics	AQA	Mathematics grade 6, English language grade 5. APS 5.6
English Language with Literature	AQA	English Language grade 5 & English Literature grade 5. APS 5
Psychology	AQA	English Language grade 5, Mathematics grade 5, Biology grade 5 or Combined science 5-5. APS 5
Sociology	AQA	English language grade 5, Mathematics grade 5. APS 5





Our A Levels

Biology

Chemistry

Mathematics

Physics

Psychology

Sociology

English Language & Literature

Extended Qualification Project

“
A level Biology made me realise the real-life applications biology has on my own life has made me want to study it further.”

Aksa,
Year 13 Student

Biology

Duration - 2 Years
Exam Board - AQA

This course aims to inspire students, nurture a passion for the subject, and lay the groundwork for further study. Some of the greatest skills shortages across the country and in Yorkshire are in STEM subjects.

Bradford Sixth Forms' curriculum is designed to provide the skills, knowledge, and experience to address these skills shortages.

The topics you will study are: Biological Molecules, Cells, Organisms Exchange Substances with Their Environment, Genetic Information, Variation and Relationships Between Organisms, Energy Transfers in and Between Organisms, How Organisms Respond to Changes in Their Internal and External Environments, Genetics, Populations, Evolution and Ecosystems, and Control of Gene Expression.

Successful completion of 12 core practicals will earn you a Practical Endorsement.

Your grades will be based on the completion of 3 external exams taken in the summer of year 2 of the course.

Where could my success take me?

Biology is a great choice of subject for people considering a career in medical professions, such as:

Medicine, Dentistry, Veterinary Science, Physiotherapy, Pharmacy or Optometry.

It would also prepare you for further study in the Life Sciences, for example Zoology, Marine Biology, Biochemistry or Neuroscience.



Chemistry

Duration - 2 Years
Exam Board - AQA

This course aims to inspire students, encourage critical thinking and problem solving. In this modern course, you will learn the core theory through study of current applications of chemistry. You will be introduced to organic, inorganic, and physical chemistry.

The specification is designed to build on your knowledge gained at GCSE. Topics you will study are: Atomic Structure, Equilibrium, Rates, Acids and Bases, halogenoalkanes, Aromatic Chemistry, Transition Metals, and Period 3 Elements.

Successful completion of 12 core practicals will earn you a Practical Endorsement.

This course is assessed, and grades based on the completion of 3 external exams taken in the summer of year 2 of the course.

Where could my success take me?

Chemistry is essential for studying Medicine, Dentistry, Veterinary Science and Pharmacy as well as Chemistry courses and some types of engineering.

It is highly recommended for Biological Sciences.



“
My experience at Bradford Sixth Form showed me the value of independence, it allowed to work with others well as well as respecting them.”

Jawad,
Year 13 Student

“

I'm excited! It's been a long, hard path to get here, but we've made it! Not knowing our results was hard, but now it's done, I'm so relieved. ”

Eliza,
Year 13 Student
receiving her results

Mathematics

Duration - 2 Years
Exam Board - AQA

This course builds on the skills, knowledge, and techniques you have studied at GCSE. You will develop your understanding of mathematical processes in a way that promotes confidence and fosters enjoyment.

You will use mathematical argument and reasoning together with mathematical language and proof.

You will study topics from the fields of pure mathematics, mechanics, and statistics.

The increased importance of the use of technology means all students will need a graphical calculator for this course.

Your grades will be based on the completion of 3 external exams taken in the summer of year 2 of the course.

Where could my success take me?

A-level Maths enables you to progress on to degree courses and careers in Physics, Engineering, Business, Computer Science, Medicine, Dentistry, Veterinary Science, and many others.



Physics

Duration - 2 Years
Exam Board - AQA

This course is ideal if you have a curiosity about how and why things in the world around you work, an ability to solve problems and use mathematical tools to model various situations, and a positive and organised attitude towards your studies.

Topics studied in the first year include Particles, Radiation, Waves, Mechanics, Materials, and Electricity, and in the second year Further Mechanics, Thermal Physics, Fields, Nuclear Physics, and Astrophysics.

You will also study how to make measurements and evaluate errors, and your skills will be assessed leading to a separate certificate to endorse practical competency.

Your grades will be based on the completion of 3 external exams taken in the summer of year 2 of the course.

Where could my success take me?

Physics is essential for studying Medicine, Dentistry, Veterinary Science and for any Engineering or Computer based courses.

A level Physics has a high mathematical demand, and it is worth considering taking A level Mathematics with this subject.



“

Lessons are very engaging, and the tutors support you in everything, whenever you need help. ”

Ben,
Year 12 Student

There are 3 modules which will be taught across the 2 years of the course:

Module 1 Introductory Topics in Psychology

Memory – including Eyewitness Testimony

Attachment – how do bonds form between infants and their parents?

Social Influence – including Conformity and Obedience

Psychopathology – The study of abnormality

Module 2 Psychology in Context

Approaches in Psychology – how do Psychologists explain behaviour?

Biopsychology – how does the brain affect behaviour?

Research Methods – how are studies conducted in Psychology?

Module 3 Issues and Options in Psychology

Issues and Debates in Psychology

Relationships – including attraction and romantic love

Forensic Psychology – investigating offending behaviour and ways of measuring crime

Aggression – explanations of human aggression, including media influences such as computer games

Psychology

Duration – 2 Years
Exam Board – AQA

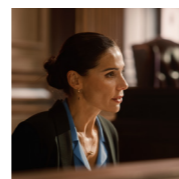
Psychology is the study of the brain and behaviour. It covers fascinating questions such as why men are more aggressive than women, how romantic relationships form, the unreliable nature of our memory, and why we obey street signs.

This course will help students to think critically about scientific ideas, while also learning about how the way humans behave is influenced by their genes and their surroundings.

This course is assessed, and grades are based on the completion of 3 external exams taken in the summer of year 2 of the course.

Where could my success take me?

Psychology can lead to many careers including clinical psychology, counselling, educational psychology, forensic psychology, and occupational psychology.



Sociology

Duration – 2 Years
Exam Board – AQA

Sociology is the study of the development and structure of society. It is a fascinating subject, taking in topics such as whether the police are racist, whether childhood is ‘toxic’ and damaging to British children, and how the media influences our views on people from different backgrounds to us.

Sociology will make you question things you may have taken for granted. Sociology helps you develop analytical, critical ways of thinking, beneficial across many subjects. You will develop your essay writing and verbal communication skills. You need an open mind and to be keen to see things from different viewpoints. An interest in the world we live in is vital, as is an interest in people, their actions, and interactions.

Grades will be based on the completion of 3 external exams, which are to be taken in the summer of year 2 of the course.

Where could my success take me?

Sociology provides excellent skills for most university degrees especially the social sciences, anthropology, and criminology. Students may follow careers in social work, law, journalism, caring professions, policing, the Civil Service, advertising, market research, teaching, and business.



There are 3 modules which will be taught across the two years of the course:

Paper 1 Education with Theory and Methods

[Education](#)

[Research Methods in Context](#)

[Theories in Sociology](#)

Paper 2 Topics in Sociology

[Families and Households](#)

[The Media](#)

Paper 3 Crime and Deviance with Theory and Methods

[Crime and Deviance](#)

[Sociological Theory](#)

[Research Methods](#)

“
I am studying
A level English,
sociology, and
psychology.
They have very
interesting
content and
it's very
enjoyable.”

McKenzie,
Year 12 Student

English Language & Literature

Duration – 2 Years
Exam Board – AQA

This is a combined A level course which allows you to analyse how writers and speakers use language across a range of fiction, literary non-fiction and everyday spoken and written language.

You will study poetry, plays and novels, as well as exploring literary non-fiction such as biography, autobiography, memoir, and journalism.

You will also be given the opportunity to study some examples of more informal communication, such as spoken language and online communication. You will learn how language is used across a range of modes and genres, adopting a range of analytical methods, and producing your own creative writing.

Finally, you will complete a project in which you compare how a theme or idea is explored across both fiction and non-fiction.

Your grades will be based on the completion of 2 external exams taken in the summer of year 2 of the course and an assessment which takes place at the mid-point of the course.

Where could my success take me?

The English Language and Literature A-level can lead to a very wide variety of degree courses and careers, including teaching, writing, and publishing.

Extended Project Qualification (EPQ)

Duration – 1 Year
Exam Board – AQA

The EPQ is a challenging Level 3 qualification that enables you to choose a topic you care about, carry out research into this topic area, and then create a 5,000 word essay.

You will need to possess exceptionally strong independent study skills, to enable you to research and evaluate a wide variety of sources.

You will need passion for one chosen area of study that will form the basis of your project and will support your applications to higher education.

You will also need to be highly organised and committed to identify, design, plan and complete this demanding project.

However, the project itself assesses your ability to work independently, managing and planning the project, using resources effectively, using a range of skills to develop and realise planned outcomes, and evaluating both the outcomes and the learning process.

This course is assessed through 100% coursework.

Throughout the year, students are supported to complete a 5000-word essay in a response to a chosen line of enquiry and to complete a project log that evidences a critical evaluation of the EPQ process. The course will provide support in the following areas, so that you can effectively plan and complete this project.

- Research skills
- Referencing and plagiarism
- Project management
- Time management
- Critical thinking
- Presentation skills
- Academic writing

The EPQ is a standalone qualification and is often taken by students to in addition to their A level studies.



Choosing your A Level combinations

At Bradford Sixth Form we think it is important that A levels you choose are the right ones for your chosen future career and employment.

We offer our A level subjects in combinations based on University degree requirements or defined career pathways.



Pathway Name	A level subject combination		
Engineering	Chemistry	Physics	Mathematics
Pure Science	Biology	Chemistry	Physics
Science	Biology	Chemistry	Mathematics
Health 1	Biology	Chemistry	Psychology
Health 2	Biology	English Language & Literature	Psychology
Social Science	English Language & Literature	Psychology	Sociology

Applying to Bradford Sixth Form

- Complete an application form at one of our events.
- Apply online: bradfordcollege.ac.uk

Once you have applied for a course you will be invited for an interview and will be offered the chance to take part in our masterclass programme designed to support you in achieving your grades in Summer 2023.

You will also be invited to join our summer School experience week beginning June 26th 2023.

During this week you will be able to experience lessons and a variety of enrichment activities including a trip to the Natural History Museum in London.

What to expect at your Sixth Form interview

At your interview, you will meet a member of the Sixth Form Team who will discuss your ambitions and career aspirations, to help you make the right choices.

The questions below are the typical ones we ask:

- 1 Which course are you interested in studying?
- 2 Why do you want to attend this college/sixth form in particular?
- 3 What are your chosen subjects?
- 4 Why are you interested in these subjects?
- 5 What careers are you considering?
- 6 What extra-curricular activities do you currently do/what do you like to do in your spare time?
- 7 What is your proudest achievement to date?
- 8 What makes you more suitable for the course than another applicant with the same grades?

What happens if I don't achieve the grades?


Don't panic. There are lots of options we can offer you. These include: Re-sitting your GCSE in Biology, Chemistry, Physics, Combined Science Trilogy, Maths, English Language, Sociology and Psychology.


If you achieve the entry grade you will automatically move on to the A level pathways.

Alternatively, you could choose to study BTEC National Diploma in Applied Science. This qualification is offered as a Foundation Diploma and an Extended Diploma. This is a 2-year course and will result in you achieving the equivalent of 3 A-level grades in science and will open the doors to almost all professions and university courses except direct entry into Medicine, Dentistry and Veterinary Science.



Bradford College

 Bradford College, Great Horton Road
Bradford, West Yorkshire, BD7 1AY

 01274 088088

 information@bradfordcollege.ac.uk

 www.bradfordcollege.ac.uk

