

■ Bradford College

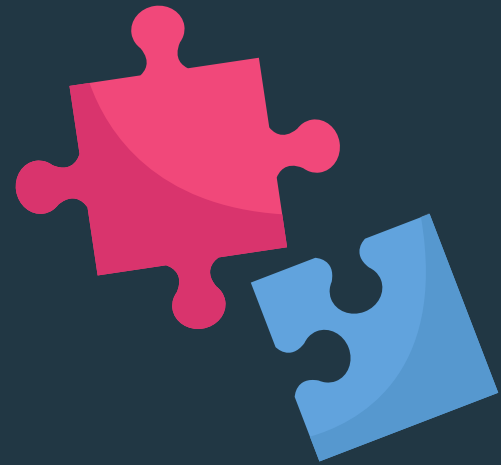
Skills for Independence

A course for students with SEND & EHCPs aged 16-24 who are working towards Entry 1 and Entry 2 in numeracy, communication and life skills.

Students take part in a fully supported, practical and engaging study programme that aims to prepare young people with learning disabilities for adulthood.

You will practice numeracy and communication skills through project and classroom work. You will develop your personal, social and life skills through an exciting enrichment programme that includes: cooking, sports, forest schools horticulture, arts and performing arts.

Your tutors will support you to build your confidence and skills. They will help you to work towards your Preparing for Adulthood targets, make good progress and be more independent within your community.



For more information
www.bradfordcollege.ac.uk/PLW

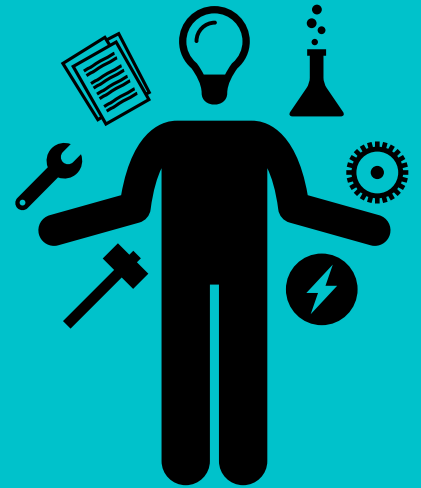
Skills for Employment

A course for students with SEND & EHCPs aged 16-24 who are working towards Entry 3 in numeracy, communication, employability and life skills.

Students take part in a practical and engaging study programme that aims to prepare young people with learning disabilities and difficulties for employment and adulthood.

You will develop your communication, numeracy, personal and social skills through classroom based and practical projects. You will develop employability skills such as team working, by volunteering in the community.

Your tutors will support you so that you can progress into vocational programmes or supported internships, and to be more independent within your community.



For more information

www.bradfordcollege.ac.uk/PLW